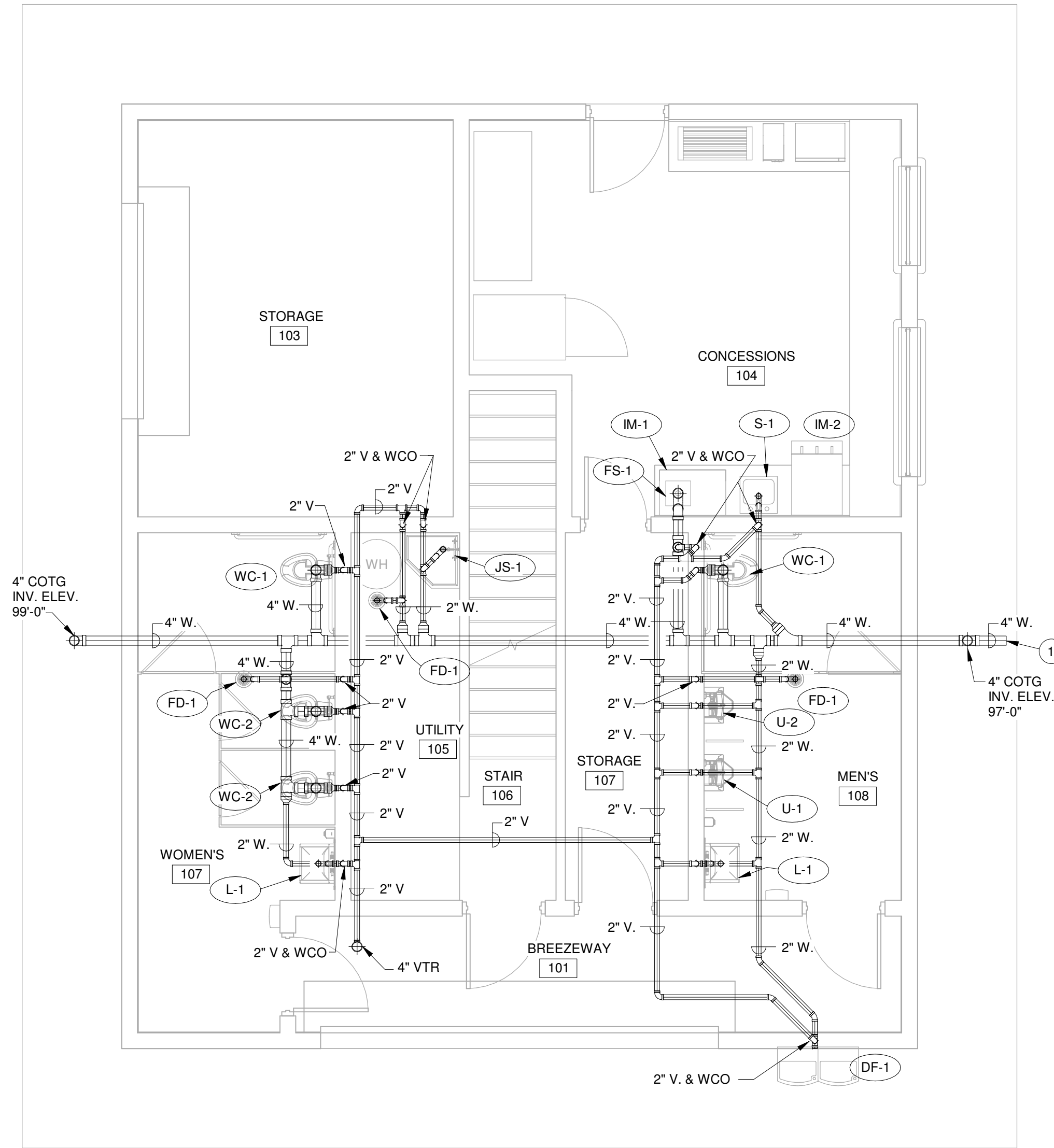


**PLAN NOTES:**

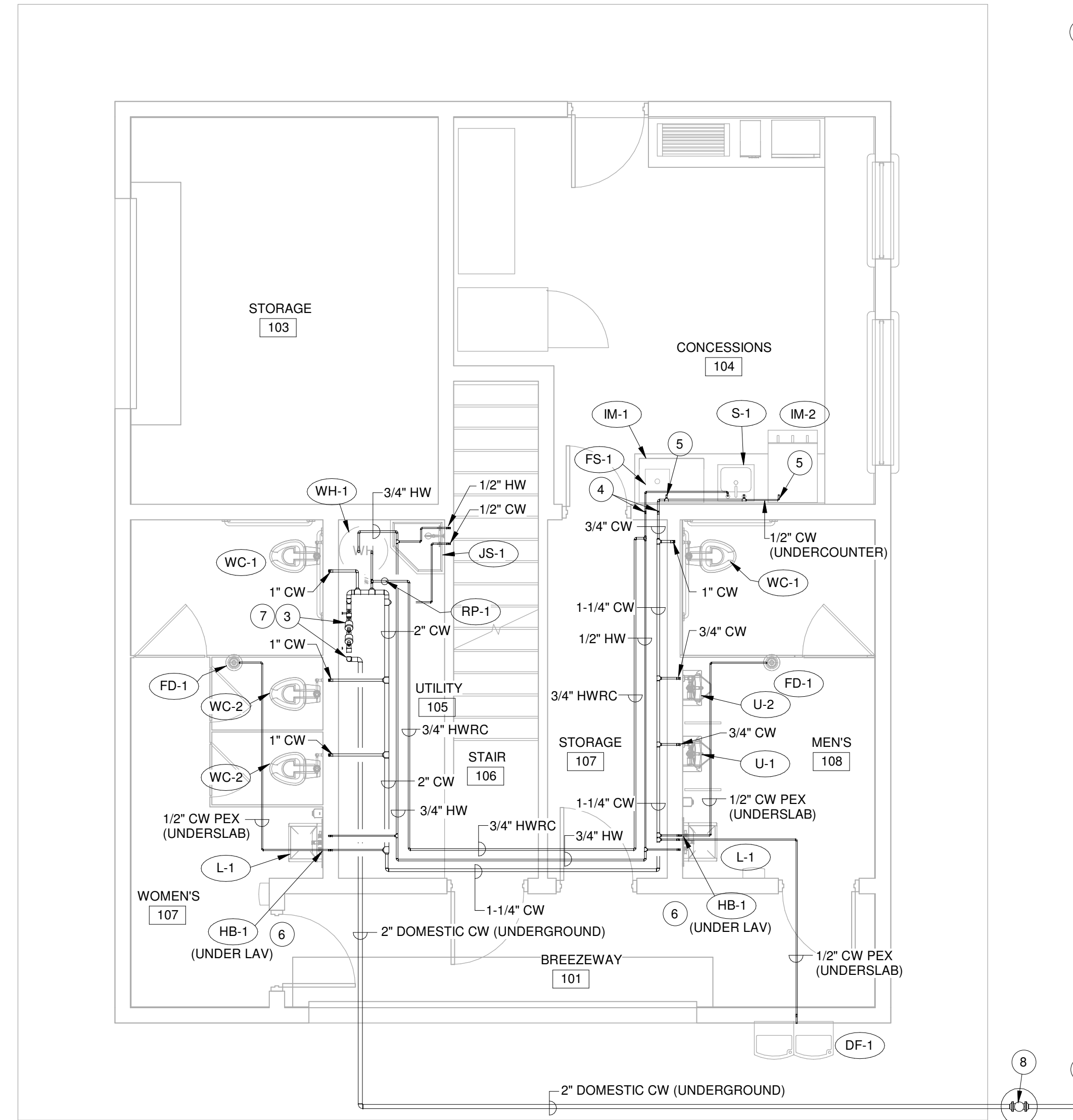
- 1 SEE CIVIL SITE PLAN FOR CONTINUATION OF 4" SEWER MAIN.
- 2 SEE CIVIL SITE PLAN FOR CONTINUATION OF 2" DOMESTIC CW MAIN.
- 3 RISE 2" DOMESTIC CW MAIN UP THRU SLAB TO WATER PRESSURE REDUCING VALVE ASSEMBLY. SEE DETAIL ON SHEET P201.
- 4 DROP 3/4" CW AND 1/2" HW DOWN IN WALL TO BELOW COUNTERTOP LEVEL. RUN PIPING UNDERCOUNTER TO SERVE FIXTURES AS REQUIRED.
- 5 INSTALL 1/2" BACKFLOW PREVENTOR ON CW LINE SERVING PLUMBING FIXTURE. RUN 3/4" DRAIN FROM BACKFLOW PREVENTOR TO FLOOR SINK MOUNTED UNDER COUNTER AND TERMINATE WITH 90 DEGREE DOWNTURNED ELBOW. SEE DETAIL ON SHEET P201.
- 6 INSTALL HOSE BIBB UNDER LAVATORY. SEE DETAIL ON SHEET P201.
- 7 PROVIDE SCHRADER VALVE AT WATER PRESSURE REDUCING VALVE STATION FOR WINTER SYSTEM DRAIN DOWN.
- 8 INSTALL STOP AND WASTE VALVE IN 2" DOMESTIC CW LINE. SEE DETAIL ON SHEET P201.

**SPECIAL NOTE:**

PLUMBING CONTRACTOR TO RUN ALL WATER PIPING IN JOIST SPACE BETWEEN LEVELS IN WARM SPACE. DO NOT RUN WATER PIPING IN COLD ATTIC SPACE.

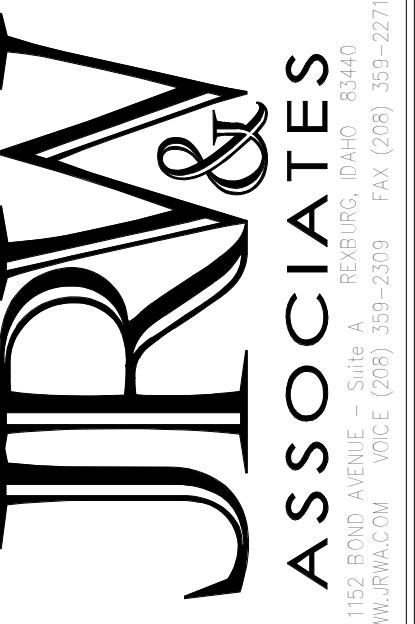


1 WASTE & VENT PIPING PLAN  
P101 1/4" = 1'-0"



2 WATER PIPING PLAN  
P101 1/4" = 1'-0"

© JRW & ASSOCIATES, PLLC. DRAWINGS AND DESIGNS ARE PROTECTED BY COPYRIGHT AND THE ARCHITECT RETAINS TOTAL OWNERSHIP AND CONTROL. ANY UNAUTHORIZED USE OF DRAWINGS, DESIGNS OR IDEAS WITHOUT WRITTEN CONSENT OF THE ARCHITECT IS PROHIBITED.



**Consultants:**  
**STRUCTURAL ENGINEERING**  
 Frost Structural Engineering  
 1020 Lincoln Road  
 Idaho Falls, ID 83401  
 Tel: (208) 227-8404  
 Fax: (208) 227-8405  
**MECHANICAL ENGINEERING**  
 Engineered Systems Assoc.  
 1335 East Center Street  
 Pocatello, Idaho 83204  
 Tel: (208) 233-0501  
 Fax: (208) 233-0529  
**ELECTRICAL ENGINEERING**  
 Payne Engineering INC.  
 1832 East Center Street  
 Pocatello, Idaho 83201  
 Tel: (208) 232-4439  
 Fax: (208) 232-1435

Project: CITY OF REXBURG JR BALL FIELDS  
 CONCESSIONS  
 Drawing Title: PLUMBING FLOOR PLANS

Revisions:

NO.	DESCRIPTION

Drawn By: SR Job Number: 788  
 Checked By: DCS Date: OCT. 2019  
 Plot Date: 10/9/2019 9:03:49 AM

**Engineered Systems Associates**  
 1335 EAST CENTER  
 POCATELLO, IDAHO 83201  
 PHONE: (208) 233-0501  
 FAX: (208) 233-0529  
 EMAIL: esa@engsystems.com  
 Oct. 8, 2019  
 ESA JOB NUMBER: 19041

Drawing Number: P101  
 File: C:\Users\Scott\Documents\CITY BALL FIELD M&P.rvt